



## DM-100/200 Utility PC Software

DM-100/200 Utility User Guide (V1.1) Nov 6, 2007

**A Silicon Valley California Company**



## DM-100/200 Utility PC Software

This Product has Patents Pending

© PLX Devices 2007 All Rights Reserved

Version 1.1 Nov 6, 2007

[www.plxdevices.com](http://www.plxdevices.com)

(408)745-7591



# Table of Contents

<b>1</b>	<b>INTRODUCTION</b>	<b>3</b>
<b>2</b>	<b>CONNECTING YOUR DM-100/200 TO THE PC</b>	<b>3</b>
<b>2.1</b>	<b>Installing the device driver.....</b>	<b>3</b>
<b>2.2</b>	<b>Connecting the DM-100/200 to the PC.....</b>	<b>3</b>
<b>3</b>	<b>UPLOADING WALLPAPERS</b>	<b>3</b>
<b>4</b>	<b>UPLOAD A CUSTOM GAUGE</b>	<b>5</b>
<b>5</b>	<b>UPDATE SENSOR TABLE</b>	<b>6</b>
<b>6</b>	<b>REVISION HISTORY</b>	<b>7</b>

# 1 Introduction

The DM-100/200 Utility allows you to perform the following 3 tasks.

1. Upload up to 8 wallpapers to the DM-100/200
2. Upload a custom gauge design
3. Update the DM-100/200 sensor table

## 2 Connecting your DM-100/200 to the PC

### 2.1 Installing the device driver

Insert the CD included in the DM-100/200 kit into your personal computer's CD-ROM drive. Run CDM\_Setup.exe. This file can also be downloaded from the website here

[http://www.plxdevices.com/IMFD/CDM\\_Setup.exe](http://www.plxdevices.com/IMFD/CDM_Setup.exe)

This operation only needs to be done one time only per PC. Please note that this device driver is only compatible with the following operating systems.

Windows Vista  
Windows Vista x64  
Windows XP  
Windows XP x64  
Windows 2000  
Windows Server 2003  
Windows Server 2003 x64

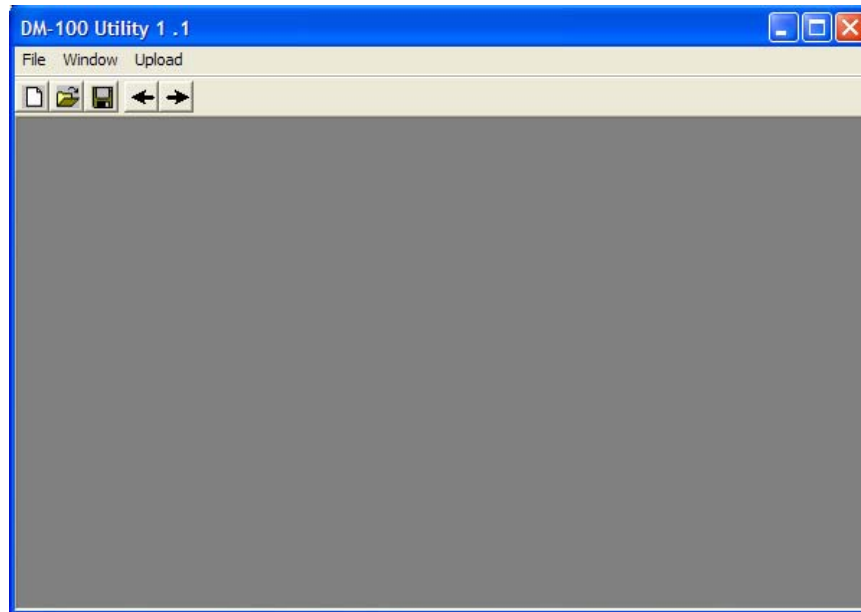
### 2.2 Connecting the DM-100/200 to the PC

Connect the supplied USB cable to the DM-100/200 control box where indicated "USB." Connect the other end of the cable to any available USB port on your PC.

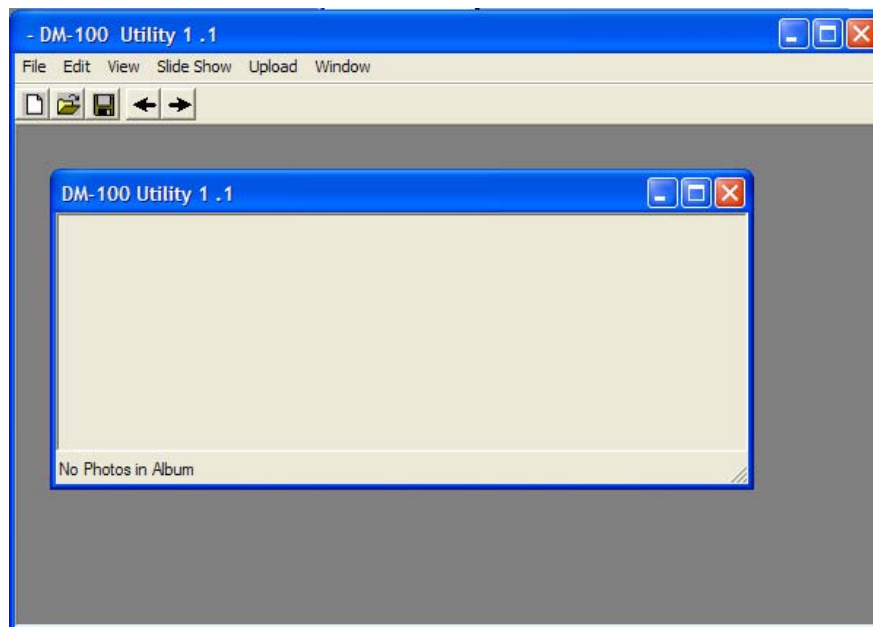
## 3 Uploading Wallpapers

To upload your custom wallpapers to the DM-100/200, you will need 1 to 8 images formatted to the size of 160 x 128 pixels. These can be any type of color image with the following file formats (bmp, jpg, gif, tiff, png).

- 1) Start the DM-100/200 utility



2) Click File, New

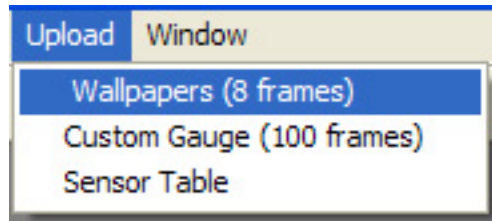


This operation starts a brand new "album."

- 3) To add pictures, click Edit, Add. A window will pop up allowing you to select an image to open. You can repeat this operation 7 more times to add 8 images to your album. The DM-100/200 can store up to 8 wallpapers.
- 4) To preview through your images, you may click on the arrow buttons



- 5) Once you're satisfied with your 8 wallpapers, click Upload, Wallpapers (8 Frames)

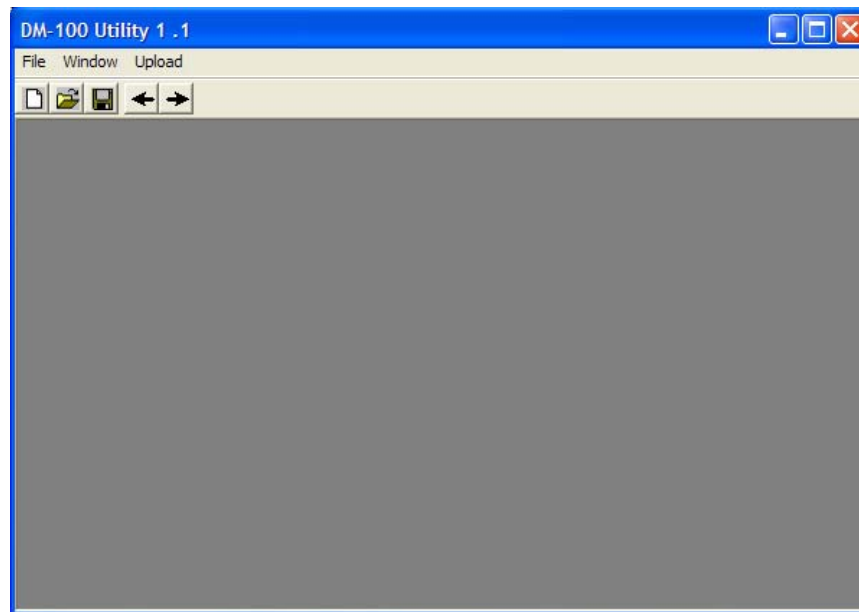


Follow the instructions on the screen and wait for the operation to complete. An "Upload Successful" message should appear upon successful upload. The DM-100/200 must be powered on and toggled to the "Connect to PC" menu for successful communication between the DM-100/200 and the PC.

- 6) If you would like to save this album for use at a later time, click File, Save. **YOU MUST SAVE YOUR ALBUM FILE AND ALL 8 IMAGES IN THE SAME FOLDER FOR THE OPEN COMMAND TO WORK PROPERLY!**

## 4 Upload a Custom Gauge

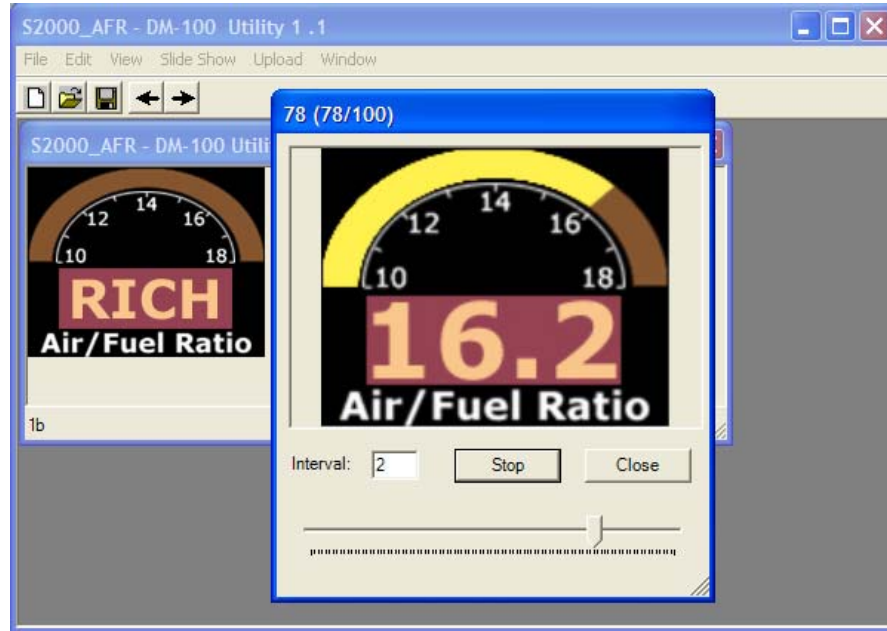
- 1) Start the DM-100/200 utility



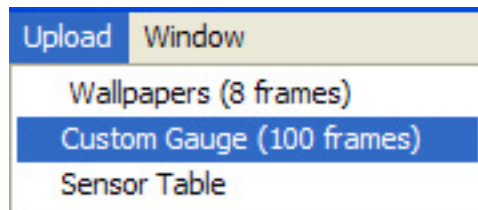
- 2) Click File, Open

Select the album file you wish to open. Complete custom gauge album files and images can be downloaded from the PLX Devices website here

<http://www.plxdevices.com/products/dm100/customgauges.html>



3) Click Upload, Custom Gauge (100 frames)

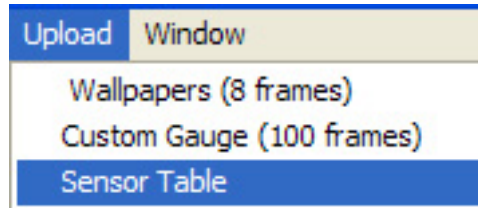


Follow the instructions on the screen and wait for the operation to complete. An "Upload Successful" message should appear upon successful upload. **The DM-100/200 must be powered on and toggled to the "Connect to PC" menu for successful communication between the DM-100/200 and the PC.**

## 5 Update Sensor Table

As more Sensor Modules (SM) become available in the iMFD product line, the sensor table must be updated to properly interpret new sensors. The best way to check if your sensor table needs updating is while scanning for new sensors. Please refer to the section titled "Setup Sensors" in your DM-100/200 user guide for more information. If your sensor is detected as a blank parameter, that means that your sensor tables does not have information on that particular sensor and an update of the sensor table is in order.

Be sure to download the latest version of DM-100/200 Utility from the PLX Devices website. The latest version will contain the most up to date sensor table. To update your sensor table simply click Upload, Sensor Table.



Follow the instructions on the screen and wait for the operation to complete. An "Upload Successful" message should appear upon successful upload. **The DM-100/200 must be powered on and toggled to the "Connect to PC" menu for successful communication between the DM-100/200 and the PC.**

## 6 Revision History

Version 1.0 (2/27/07)	Initial release
Version 1.1 (11/6/07)	Added information for DM-200